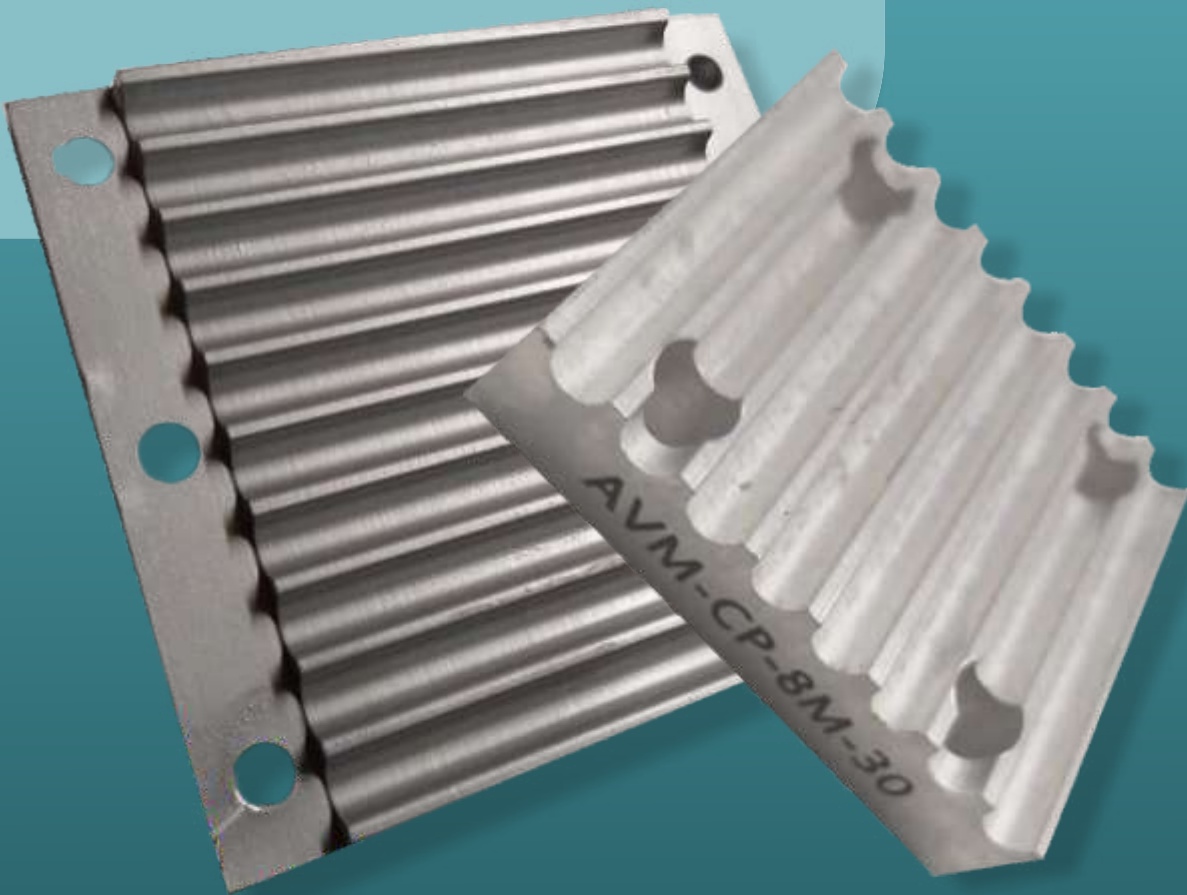




AVM TIMING PULLEY PVT. LTD.
(formerly known as Ultrahigh (india) Engineers)



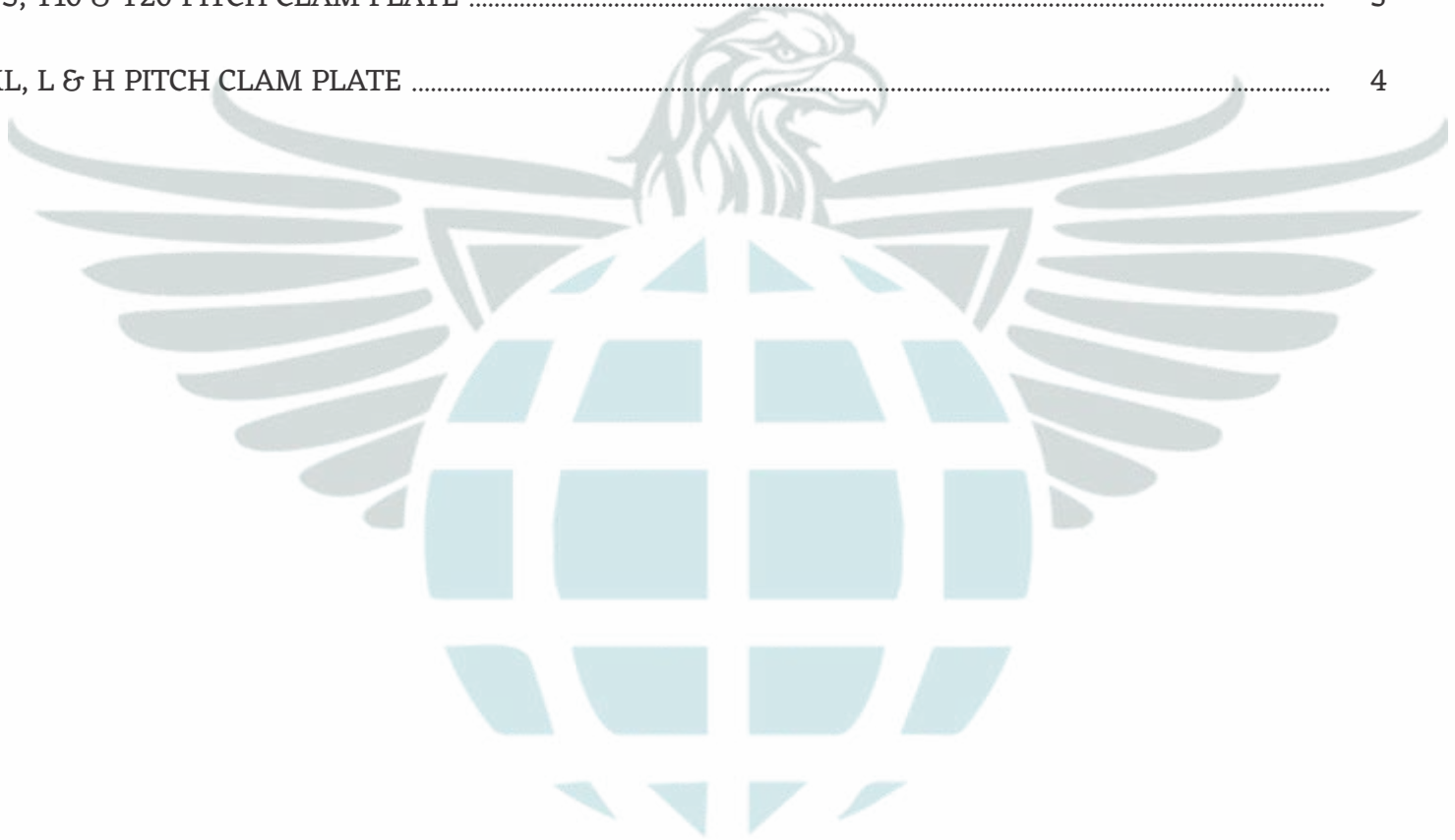
**AVM BRAND
TIMING PULLEY**

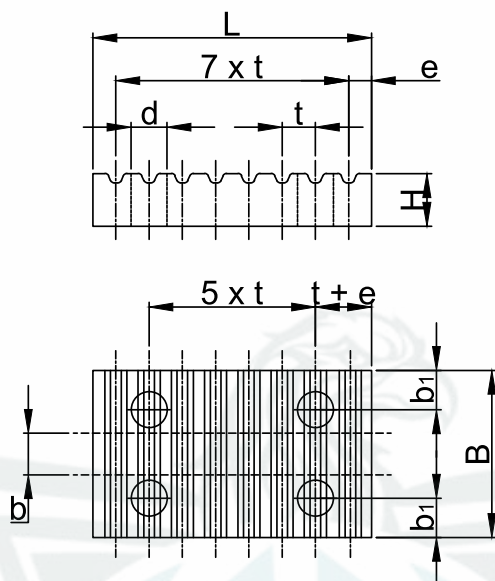
MANUFACTURER | SUPPLIER | EXPORTER
OF TAPER LOCK TIMING PULLEY

www.avmtimingpulley.com

TAPER LOCK BUSH TIMING PULLEY

5mm, 8mm & 14mm PITCH CLAM PLATE.....	1
At5, AT10 & AT20 PITCH CLAM PLATE	2
T5, T10 & T20 PITCH CLAM PLATE	3
XL, L & H PITCH CLAM PLATE	4





TECHNICAL SPECIFICATIONS

5mm Pitch Clam Plate Ref. CP-5M

DESIGNATION	PITCH T (MM)	BELTS WIDTH b (MM)	MATERIAL	B (MM)	b1 (MM)	L (MM)	e (MM)	H (MM)	d (MM)	WEIGHT (KG)
CP-5M-09	5.000	9.00	ALUMINIUM	28.0	6.0	41.8	3.2	8.0	5.5	0.018
CP-5M-15	5.000	15.00	ALUMINIUM	34.0	6.0	41.8	3.2	8.0	5.5	0.022
CP-5M-25	5.000	25.00	ALUMINIUM	44.0	6.0	41.8	3.2	8.0	5.5	0.030

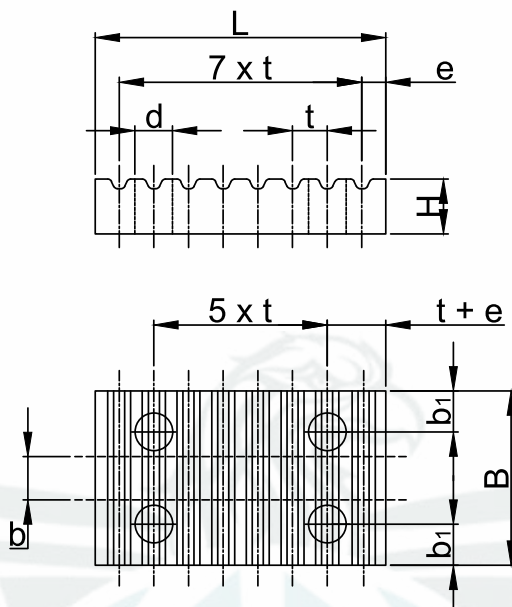
8mm Pitch Clam Plate Ref. CP-8M

DESIGNATION	PITCH T (MM)	BELTS WIDTH b (MM)	MATERIAL	B (MM)	b1 (MM)	L (MM)	e (MM)	H (MM)	d (MM)	WEIGHT (KG)
CP-8M-20	8.000	20.00	ALUMINIUM	45.0	8.0	66.0	5.0	15.0	9.0	0.100
CP-8M-30	8.000	30.00	ALUMINIUM	55.0	8.0	66.0	5.0	15.0	9.0	0.120
CP-8M-50	8.000	50.00	ALUMINIUM	75.0	8.0	66.0	5.0	15.0	9.0	0.170
CP-8M-85	8.000	85.00	ALUMINIUM	110.0	8.0	66.0	5.0	15.0	9.0	0.250

14mm Pitch Clam Plate Ref. CP-14M

DESIGNATION	PITCH T (MM)	BELTS WIDTH b (MM)	MATERIAL	B (MM)	b1 (MM)	L (MM)	e (MM)	H (MM)	d (MM)	WEIGHT (KG)
CP-14M-40	14.000	40.00	ALUMINIUM	71.0	10.0	116.0	9.0	22.0	11.0	0.405
CP-14M-55	14.000	55.00	ALUMINIUM	86.0	10.0	116.0	9.0	22.0	11.0	0.495
CP-14M-85	14.000	85.00	ALUMINIUM	116.0	10.0	116.0	9.0	22.0	11.0	0.860
CP-14M-115	14.000	115.00	ALUMINIUM	146.0	10.0	116.0	9.0	22.0	11.0	1.195

Please note all dimensions are in mm



TECHNICAL SPECIFICATIONS

AT5 PITCH CLAM PLATE REF. CP-AT5

DESIGNATION	PITCH T (MM)	BELTS WIDTH b (MM)	MATERIAL	B (MM)	b1 (MM)	L (MM)	e (MM)	H (MM)	d (MM)	WEIGHT (KG)
CP-10 AT5	5.000	10.00	ALUMINIUM	29.0	6.0	41.8	3.2	8.0	5.5	0.019
CP-16 AT5	5.000	16.00	ALUMINIUM	35.0	6.0	41.8	3.2	8.0	5.5	0.024
CP-25 AT5	5.000	25.00	ALUMINIUM	44.0	6.0	41.8	3.2	8.0	5.5	0.031
CP-32 AT5	5.000	32.00	ALUMINIUM	51.0	6.0	41.8	3.2	8.0	5.5	0.036
CP-50 AT5	5.000	50.00	ALUMINIUM	69.0	6.0	41.8	3.2	8.0	5.5	0.043

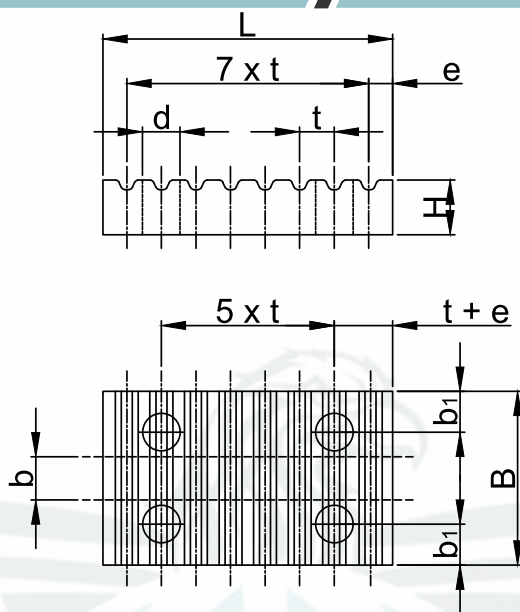
AT10 PITCH CLAM PLATE REF. CP-AT10

DESIGNATION	PITCH T (MM)	BELTS WIDTH b (MM)	MATERIAL	B (MM)	b1 (MM)	L (MM)	e (MM)	H (MM)	d (MM)	WEIGHT (KG)
CP-16 AT10	10.000	16.00	ALUMINIUM	41.0	8.0	80.0	5.0	15.0	9.0	0.110
CP-25 AT10	10.000	25.00	ALUMINIUM	50.0	8.0	80.0	5.0	15.0	9.0	0.135
CP-32 AT10	10.000	32.00	ALUMINIUM	57.0	8.0	80.0	5.0	15.0	9.0	0.155
CP-50 AT10	10.000	50.00	ALUMINIUM	75.0	8.0	80.0	5.0	15.0	9.0	0.205
CP-75 AT10	10.000	75.00	ALUMINIUM	100.0	8.0	80.0	5.0	15.0	9.0	0.280
CP-100 AT10	10.00	100.00	ALUMINIUM	125.0	8.0	80.0	5.0	15.0	9.0	0.350

AT20 PITCH CLAM PLATE REF. CP-AT20

DESIGNATION	PITCH T (MM)	BELTS WIDTH b (MM)	MATERIAL	B (MM)	b1 (MM)	L (MM)	e (MM)	H (MM)	d (MM)	WEIGHT (KG)
CP-25 AT20	20.000	25.00	ALUMINIUM	56.0	10.0	160.0	10.0	20.0	11.0	0.385
CP-32 AT20	20.000	32.00	ALUMINIUM	65.0	10.0	160.0	10.0	20.0	11.0	0.450
CP-50 AT20	20.000	50.00	ALUMINIUM	81.0	10.0	160.0	10.0	20.0	11.0	0.570
CP-75 AT20	20.000	75.00	ALUMINIUM	106.0	10.0	160.0	10.0	20.0	11.0	0.755
CP-100 AT20	20.000	100.00	ALUMINIUM	132.0	10.0	160.0	10.0	20.0	11.0	0.940

Please note all dimensions are in mm



TECHNICAL SPECIFICATIONS

T5 PITCH CLAM PLATE REF. CP-T5

DESIGNATION	PITCH T (MM)	BELTS WIDTH b (MM)	MATERIAL	B (MM)	b1 (MM)	L (MM)	e (MM)	H (MM)	d (MM)	WEIGHT (KG)
CP-10 T5	5.000	10.00	ALUMINIUM	29.0	6.0	41.4	3.2	8.0	5.5	0.025
CP-16 T5	5.000	16.00	ALUMINIUM	35.0	6.0	41.4	3.2	8.0	5.5	0.030
CP-25 T5	5.000	25.00	ALUMINIUM	44.0	6.0	41.4	3.2	8.0	5.5	0.036
CP-32 T5	5.000	32.00	ALUMINIUM	51.0	6.0	41.4	3.2	8.0	5.5	0.042
CP-50 T5	5.000	50.00	ALUMINIUM	69.0	6.0	41.4	3.2	8.0	5.5	0.051

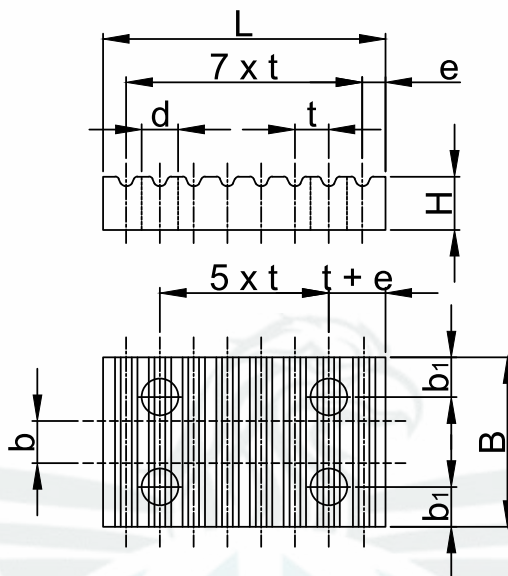
T10 PITCH CLAM PLATE REF. CP-T10

DESIGNATION	PITCH T (MM)	BELTS WIDTH b (MM)	MATERIAL	B (MM)	b1 (MM)	L (MM)	e (MM)	H (MM)	d (MM)	WEIGHT (KG)
CP-16 T10	10.000	16.00	ALUMINIUM	41.0	8.0	80.0	5.0	15.0	9.0	0.115
CP-25 T10	10.000	25.00	ALUMINIUM	50.0	8.0	80.0	5.0	15.0	9.0	0.140
CP-32 T10	10.000	32.00	ALUMINIUM	57.0	8.0	80.0	5.0	15.0	9.0	0.160
CP-50 T10	10.000	50.00	ALUMINIUM	75.0	8.0	80.0	5.0	15.0	9.0	0.215
CP-75 T10	10.000	75.00	ALUMINIUM	100.0	8.0	80.0	5.0	15.0	9.0	0.290
CP-100 T10	10.000	100.00	ALUMINIUM	125.0	8.0	80.0	5.0	15.0	9.0	0.370

T20 PITCH CLAM PLATE REF. CP-T20

DESIGNATION	PITCH T (MM)	BELTS WIDTH b (MM)	MATERIAL	B (MM)	b1 (MM)	L (MM)	e (MM)	H (MM)	d (MM)	WEIGHT (KG)
CP-25 T20	20.000	25.00	ALUMINIUM	56.0	10.0	160.0	10.0	20.0	11.0	0.385
CP-32 T20	20.000	32.00	ALUMINIUM	65.0	10.0	160.0	10.0	20.0	11.0	0.450
CP-50 T20	20.000	50.00	ALUMINIUM	81.0	10.0	160.0	10.0	20.0	11.0	0.570
CP-75 T20	20.000	75.00	ALUMINIUM	106.0	10.0	160.0	10.0	20.0	11.0	0.755
CP-100 T20	20.000	100.00	ALUMINIUM	132.0	10.0	160.0	10.0	20.0	11.0	0.940

Please note all dimensions are in mm



TECHNICAL SPECIFICATIONS

XL PITCH CLAM PLATE REF. CP-XL

DESIGNATION	PITCH T (MM)	BELTS WIDTH b (MM)	MATERIAL	B (MM)	b1 (MM)	L (MM)	e (MM)	H (MM)	d (MM)	WEIGHT (KG)
CP-XL 037	5.080	9.53	ALUMINIUM	28.5	6.0	42.5	3.5	8.0	5.5	0.025
CP-XL 050	5.080	12.70	ALUMINIUM	32.0	6.0	42.5	3.5	8.0	5.5	0.027
CP-XL 075	5.080	19.05	ALUMINIUM	38.0	6.0	42.5	3.5	8.0	5.5	0.032
CP-XL 100	5.080	25.40	ALUMINIUM	45.0	6.0	42.5	3.5	8.0	5.5	0.038

L PITCH CLAM PLATE REF. CP-L

DESIGNATION	PITCH T (MM)	BELTS WIDTH b (MM)	MATERIAL	B (MM)	b1 (MM)	L (MM)	e (MM)	H (MM)	d (MM)	WEIGHT (KG)
CP-L 050	9.525	12.70	ALUMINIUM	39.0	8.0	76.6	5.0	15.0	9.0	0.104
CP-L 075	9.525	19.05	ALUMINIUM	45.0	8.0	76.6	5.0	15.0	9.0	0.121
CP-L 100	9.525	25.40	ALUMINIUM	51.5	8.0	76.6	5.0	15.0	9.0	0.140
CP-L 150	9.525	38.10	ALUMINIUM	64.0	8.0	76.6	5.0	15.0	9.0	0.177
CP-L 200	9.252	50.80	ALUMINIUM	77.0	8.0	76.6	5.0	15.0	9.0	0.215

H PITCH CLAM PLATE REF. CP-H

DESIGNATION	PITCH T (MM)	BELTS WIDTH b (MM)	MATERIAL	B (MM)	b1 (MM)	L (MM)	e (MM)	H (MM)	d (MM)	WEIGHT (KG)
CP-H 075	12.700	19.05	ALUMINIUM	51.0	10.0	106.9	9.0	22.0	11.0	0.075
CP-H 100	12.700	25.40	ALUMINIUM	57.5	10.0	106.9	9.0	22.0	11.0	0.100
CP-H 150	12.700	38.10	ALUMINIUM	70.0	10.0	106.9	9.0	22.0	11.0	0.150
CP-H-200	12.700	50.80	ALUMINIUM	83.0	10.0	106.9	9.0	22.0	11.0	0.200
CP-H 300	12.700	76.20	ALUMINIUM	108.0	10.0	106.9	9.0	22.0	11.0	0.300
CP-H 400	12.700	101.60	ALUMINIUM	134.0	10.0	106.9	9.0	22.0	11.0	0.400



AVM TIMING PULLEY PVT. LTD.

(formerly known as Ultrahigh (india) Engineers)

- 📍 60, Vishala Estate (East), Nr. Madhuram Estate,
Kathwada Ring Road, Odhav, Ahmedabad - 382415. (Gujarat), India
- 📞 Mr. Amit Patel +91 9327595211
- 📞 +91 93275 95211 | +91 98980 98434
- ✉️ amitptp@gmail.com | info@timingpulleyindia.com
- 🌐 www.avmtimingpulley.com